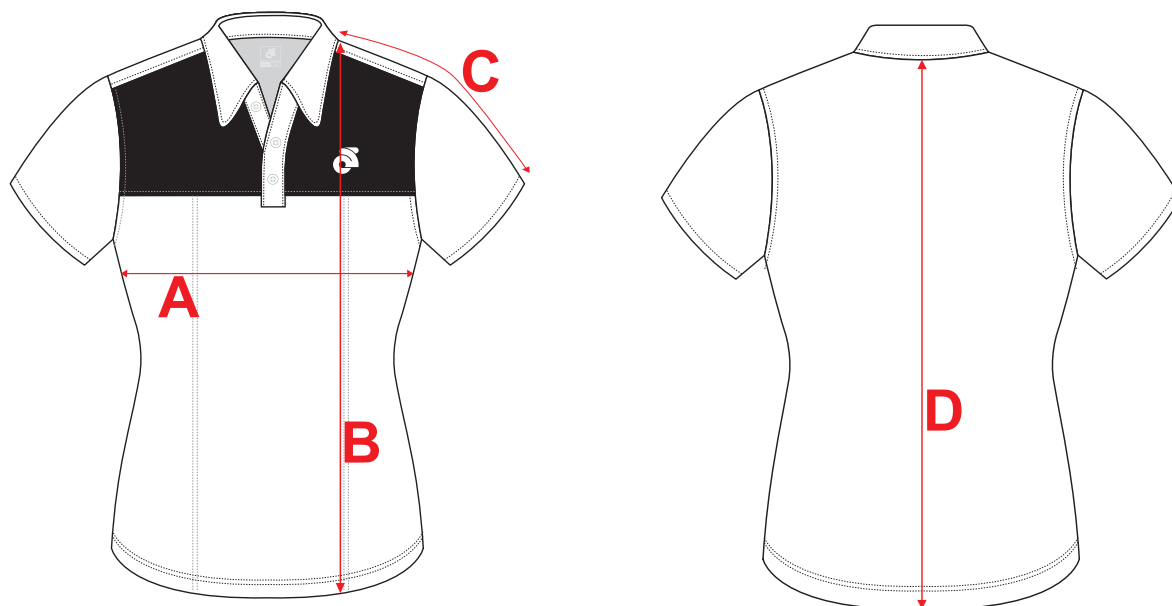


If you're unsure which size to buy, try measuring a Technical Polo Shirt that you already own that fits you well, and compare those measurements to the size chart. Lay the Technical Polo Shirt on a flat surface and use the above guide to measure the Technical Polo Shirt.

**Note: All measurements are approximate.**

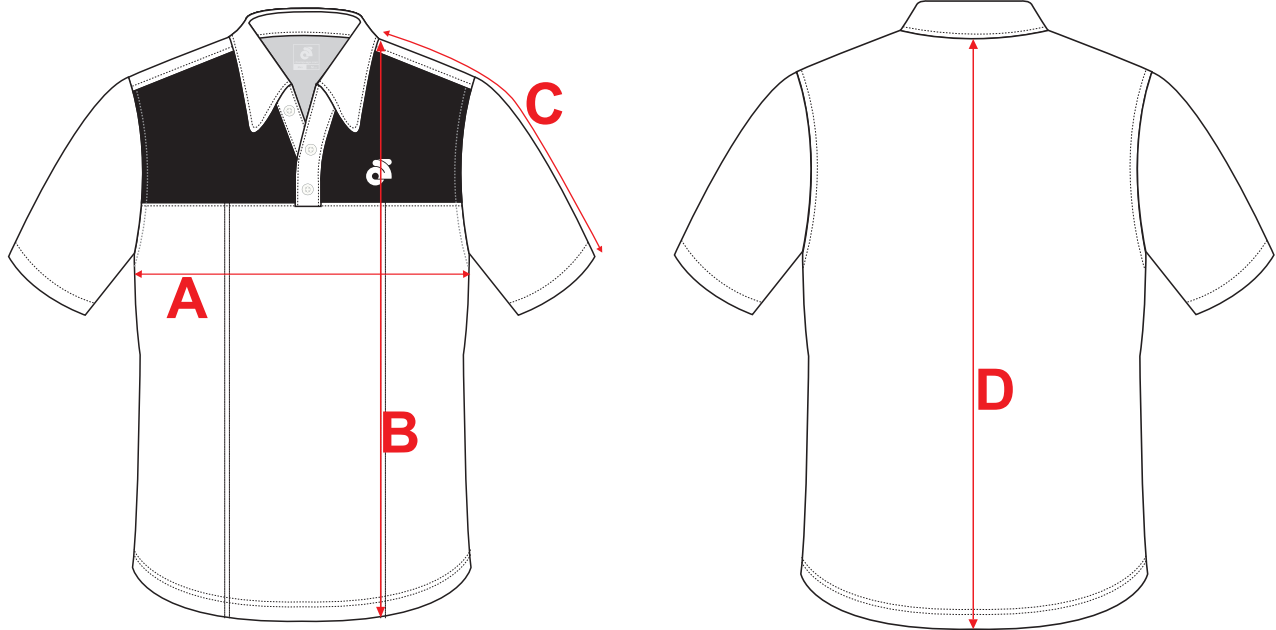
Size	A (Chest)	B (Front Length)	C (S/S Length)	D (Back Length)
<b>XS</b>	<b>18 1/2"</b>	<b>25 1/2"</b>	<b>12 3/4"</b>	<b>24 3/4"</b>
<b>S</b>	<b>19 1/2"</b>	<b>26 1/2"</b>	<b>13 1/4"</b>	<b>25 5/8"</b>
<b>M</b>	<b>20 1/2"</b>	<b>27 1/2"</b>	<b>13 3/4"</b>	<b>26 1/2"</b>
<b>L</b>	<b>21 1/2"</b>	<b>28 1/2"</b>	<b>14 1/4"</b>	<b>27 3/8"</b>
<b>XL</b>	<b>23"</b>	<b>29"</b>	<b>14 3/4"</b>	<b>27 3/4"</b>
<b>2XL</b>	<b>24 1/2"</b>	<b>29 1/2"</b>	<b>15 1/4"</b>	<b>28 1/8"</b>
<b>3XL</b>	<b>26"</b>	<b>30"</b>	<b>15 3/4"</b>	<b>28 1/2"</b>
<b>4XL</b>	<b>27 1/2"</b>	<b>30 1/2"</b>	<b>16 1/4"</b>	<b>28 7/8"</b>



If you're unsure which size to buy, try measuring a Technical Polo Shirt that you already own that fits you well, and compare those measurements to the size chart. Lay the Technical Polo Shirt on a flat surface and use the above guide to measure the Technical Polo Shirt.

**Note: All measurements are approximate.**

<b>Size</b>	<b>A (Chest)</b>	<b>B (Front Length)</b>	<b>C (S/S Length)</b>	<b>D (Back Length)</b>
<b>XS</b>	<b>16 1/2"</b>	<b>24"</b>	<b>10"</b>	<b>23 1/4"</b>
<b>S</b>	<b>17 1/2"</b>	<b>25"</b>	<b>10 1/2"</b>	<b>24 1/8"</b>
<b>M</b>	<b>18 1/2"</b>	<b>26"</b>	<b>11"</b>	<b>25 "</b>
<b>L</b>	<b>19 1/2"</b>	<b>27"</b>	<b>11 1/2"</b>	<b>25 7/8"</b>
<b>XL</b>	<b>20 1/2"</b>	<b>28"</b>	<b>12"</b>	<b>26 3/4"</b>
<b>2XL</b>	<b>21 1/2"</b>	<b>29"</b>	<b>12 1/2"</b>	<b>27 5/8"</b>
<b>3XL</b>	<b>23"</b>	<b>29 1/2"</b>	<b>13"</b>	<b>28"</b>
<b>4XL</b>	<b>24 1/2"</b>	<b>30"</b>	<b>13 1/2"</b>	<b>28 3/8"</b>



If you're unsure which size to buy, try measuring a Technical Polo Shirt that you already own that fits you well, and compare those measurements to the size chart. Lay the Technical Polo Shirt on a flat surface and use the above guide to measure the Technical Polo Shirt.

**Note: All measurements are approximate.**

Size	A (Chest)	B (Front Length)	C (S/S Length)	D (Back Length)
XS	13"	19"	8 1/2"	18"
S	14"	20 1/2"	9"	19 1/2"
M	15"	22"	9 1/2"	21"
L	16"	23 1/2"	10"	22 1/2"
XL	17"	25"	10 1/2"	24"