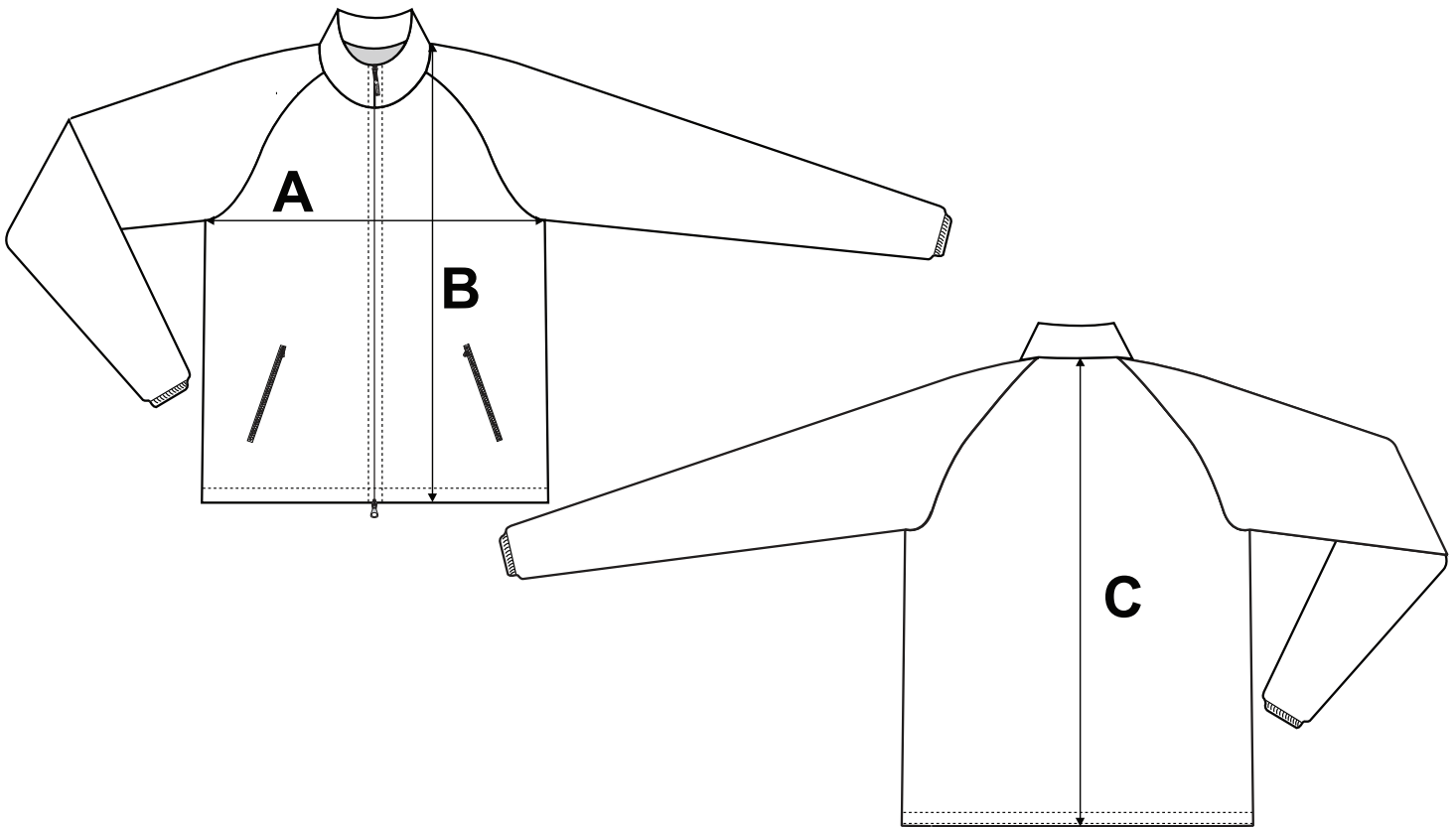


If you're unsure which size to buy, try measuring a tech jacket that you already own that fits you well, and compare those measurements to the size chart. Lay the tech jacket on a flat surface and use the above guide to measure the tech jacket.

Note: All measurements are approximate.

Size	A (Chest)	B (Front Length)	C (Back Length)
XS	18"	25 1/2"	25 1/2"
S	19"	26 1/2"	26 1/4"
M	20"	27 1/4"	27"
L	21"	28"	27 3/4"
XL	22"	28 3/4"	28 1/2"
2XL	23"	30 1/2"	30 1/4"
3XL	24"	31 1/4"	31"
4XL	25"	32"	31 3/4"



If you're unsure which size to buy, try measuring a casual jacket that you already own that fits you well, and compare those measurements to the size chart. Lay the casual jacket on a flat surface and use the above guide to measure the casual jacket.

Note: All measurements are approximate.

Size	A (Chest)	B (Front Length)	C (Back Length)
XS	19"	26 1/2"	26 1/2"
S	20"	27 1/4"	27"
M	21"	28"	27 3/4"
L	22"	28 3/4"	28 1/2"
XL	23"	30 1/2"	30 1/4"
2XL	24"	31 1/4"	31"
3XL	25"	32"	31 3/4"
4XL	26"	32 3/4"	32 1/2"